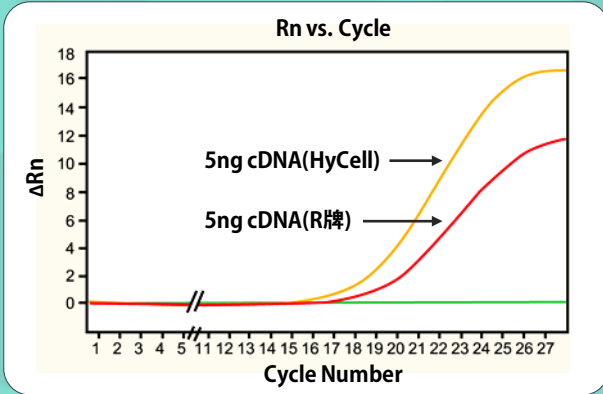


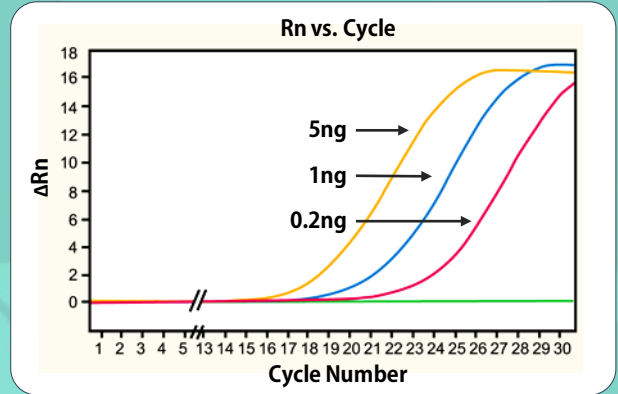


HyCell 2x qPCR Master Mix

Comparison qPCR: HyCell vs. Brand R



qPCR for Human β -actin: Serial Dilution



與R牌比較，靈敏度 **勝**

定量精準，再現性 **高**

- ❌ 高專一性，避免 Primer-dimer 產生，降低背景值
- ❌ 可依需求選擇 SYBR Green-based 或 Probe-based
- ❌ 可根據使用機型，選擇含 ROX dye 之 Master Mix

品名	適用機型	
2X qPCR Master Mix with ROX	Applied Biosystems	ABI Prism® 7000
		ABI Prism® 7300
		ABI Prism® 7700
		ABI Prism® 7900
		StepOne™
		StepOnePlus™
Eppendorf	Mastercycler® ep realplex 4	
	Applied Biosystems	ABI Prism® 7500
2X qPCR Master Mix with low ROX	Stratagen	Mx3000
		Mx3005
		Mx4000

品名	適用機型	
2X qPCR Master Mix	Bio-Rad	CFX96
	Roche	LightCycler® 480
	MJ Research	Opticon®
		Opticon® 2
		Chromo® 4
	Carbett Life Science	Rotor-Gene™ 600
		Rotor-Gene™ 3000
	Eppendorf	Mastercycler® ep realplex 2

敬

5mL 只要 \$7,800

限時優惠再 **買一送一**

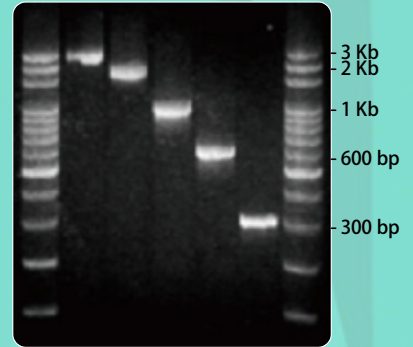




HyCell 2x PCR Master Mix Red

- ✘ **超簡單!** 只需加入Template、Primer、ddH₂O即可
- ✘ **超安心!** 減少Pipetting Error所導致的實驗誤差
- ✘ **超方便!** 內含紅色Loading Dye，可直接進行電泳

1.25 mL x 10 優惠價 \$6,200



Master Mix activity test shows that 300bp to 3kb DNA fragments can be amplified.

一般Taq無法滿足您的需求?

- 2x Pfu Mix
- 2x HiFi Mix
- 2x Hot Start Mix

幫助您輕鬆完成實驗!

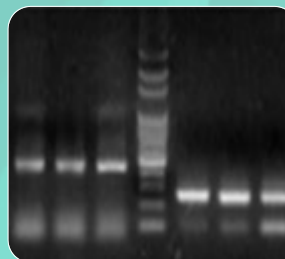
5 mL 特賣價 \$5,800

	2x Master Mix Red	2x Hot Start Mix	2x HiFi Mix	2x Pfu Mix
Activity	+++	+++	+++	++
Proofreading	-	-	+	+
Max Product	10 K	5 K	20 K	6-7 K
94°C Half Life	30 mins	30 mins	120 mins	120 mins
Polymerization Rate (kb/min)	1	1	1	0.5
Error Rate	2×10^{-5}	2×10^{-5}	1×10^{-6}	1×10^{-6}
Addition A Tail	+	+	+	-

反轉錄也有Master Mix囉!

- ✘ 只需加入RNA template及ddH₂O
- ✘ 原核、真核生物之RNA均可使用
- ✘ 產物不須純化，可直接進行實驗

Eukaryotic 1 2 3 M Prokaryotic 4 5 6



β-actin RT-PCR
Lane1-3 is soybean RNA
Lane4-6 is E.coli RNA

Lane1: MMLV-RTase + Oligo dT
Lane2: 2x RT Master Mix
Lane3: MMLV-RTase + Specific Primer
M: 100 bp DNA Ladder
Lane4: MMLV-RTase + Random 6mer
Lane5: 2x RT Master Mix
Lane6: MMLV-RTase + Specific Primer

2x RT Master Mix 50 rxns 下殺 \$5,900

